

# MasterLift & Tools

Il Master Lift è uno strumento di sollevamento versatile, alimentato a batteria e semovente che può essere equipaggiato con adattatori intercambiabili per il sollevamento e la movimentazione di componenti di veicoli ferroviari.

## Basic model:

### General information:

Operating time:	+/- 2 h.
Charging time:	+/- 3 h.
Driving speed, soft start:	+/- 5 km/h
Lifting speed - two stage:	+/- 150/1000 mm/min
Length (without adapter):	900 mm
Width:	980 mm



### MasterLift Model 0905

Price: €19.700,-

Lifting height:	900 mm
Overall height:	1426 mm
<b>Lift capacity:</b>	<b>500 kg</b>
Own weight:	780 kg

### MasterLift Model 0915

Price: €23.700,-

Lifting height:	900 mm
Overall height:	1426 mm
<b>Lift capacity:</b>	<b>1500 kg</b>
Own weight:	1580 kg



### MasterLift Model 1805

Price: € 23.300,-

Lifting height: 1800 mm  
Overall height: 2326 mm  
**Lift capacity: 500 kg**  
Eigengewicht: 880 kg

### MasterLift Model 1815

Price: € 27.700,-

Lifting height: 1800 mm  
Overall height: 2326 mm  
**Lift capacity: 1500 kg**  
Own weight: 1750 kg

## Tools:

Il MasterLift può essere dotato di diversi strumenti per semplificare il tuo lavoro.



### Fork Lifter

Price: € 1.970,-

Forklift attachment for universal use.

Lift capacity: 350 kg  
Fork length: 1200 mm  
Adjustment: 600 mm



### Buffer Lifter „Easy“

Price: € 1.970,-

Attachment for lifting and transporting buffers . Used for installing buffers.

Lift capacity: 350 kg

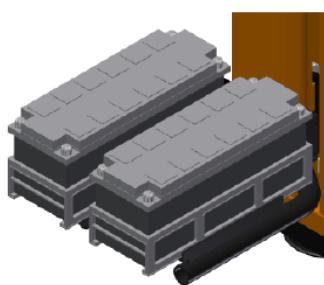


### Buffer Lifter

Price: € 2.950,-

"easy" with support plate that tilts. The support plate is lateral adjustable and rotatable.

Lift capacity:	350 kg
Lateral adjustment:	+/- 40 mm
Rotation:	0-360°



### Battery Lifter

Price: € 1.970,-

Adjustable attachment to transport, lift and install lead-acid batteries.

Lift capacity:	200 kg
Lateral adjustment:	+/- 100 mm



### 3th-Hand Lifter „Easy“

Price: € 1.350,-

"3rd hand" attachment for the removal and installation of heavier components under the rail car.

Lift capacity:	150 kg
----------------	--------

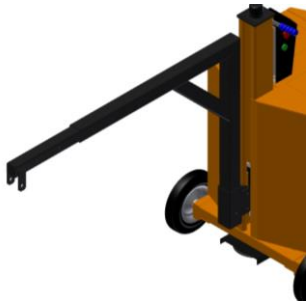


### Spring Lifter

Price: € 970,-

Attachment for transport and installation of flat springs.

Lift capacity:	300 kg
----------------	--------



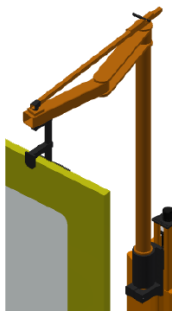
**Crane Lifter**

Price: € 1.450,-

Attachment for lifting crane.

Lift capacity:

150-300 kg



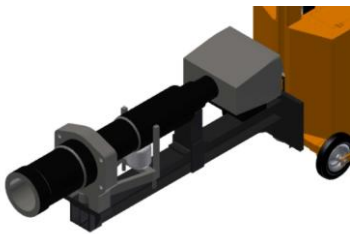
**Door Lifter**

Price: € 3.570,-

Attachment for transporting, lifting and mounting vehicle doors.

Lift capacity:

120 kg



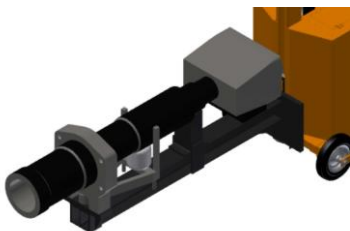
**Coupler Lifter**

Price: € 2.450,-

Attachment for transporting, lifting and mounting vehicle couplers.

Lift capacity:

200 kg



**Coupler Lifter „Heavy“\***

Price: € 3.750,-

Attachment for transporting, lifting and mounting vehicle couplers.

Lift capacity:

450 kg

*\*Only useable with Type 0915 and Type 1815.*

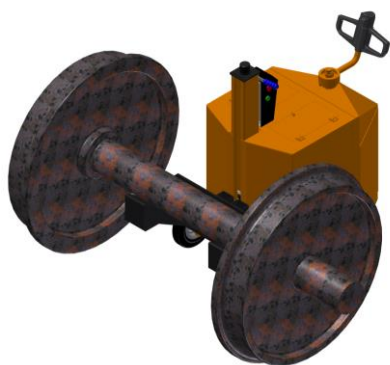


**Wheel Lifter**

Price: € 1.750,-

Attachment for transporting, lifting and mounting of individual wheels

Lift capacity: 500 kg



**Wheelset Lifter\***

Price: € 2.350,-

Attachment for transporting, lifting and mounting of wheel sets

Lift capacity: 1500 kg

*\*Only useable with Type 0915 and Type 1815.*



**Window Lifter\***

Price: € 23.500,-

Fully movable lift arm including vacuum lifters for the assembly of wagon windows.

Lift capacity: 200 kg

*Further information is contained in the Window Lifter sheet.*

*\*Only useable with Type 0915 and Type 1815.*